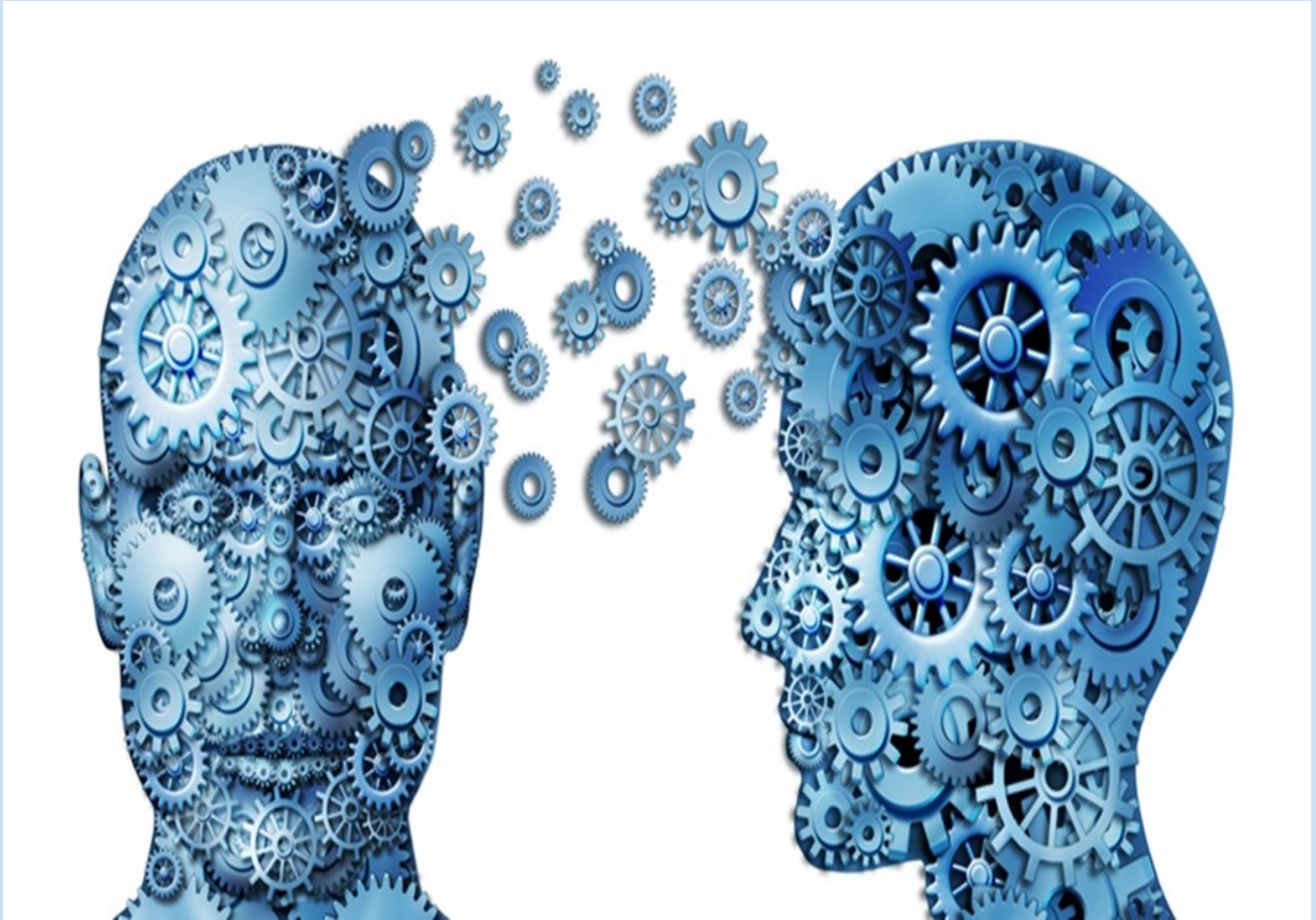


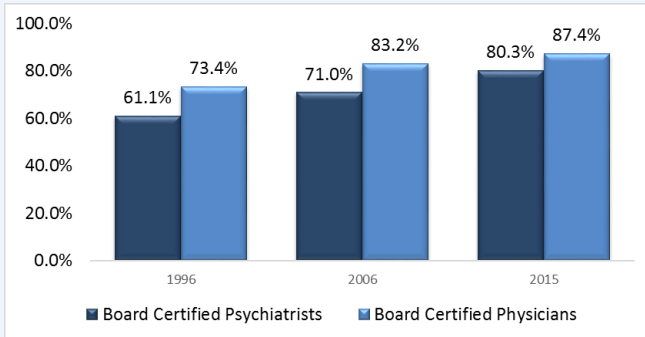
TRENDS
PSYCHIATRY PHYSICIANS
GEORGIA



GEORGIA BOARD FOR PHYSICIAN WORKFORCE
OCTOBER 2017

SUPPLY AND DISTRIBUTION OF PSYCHIATRISTS

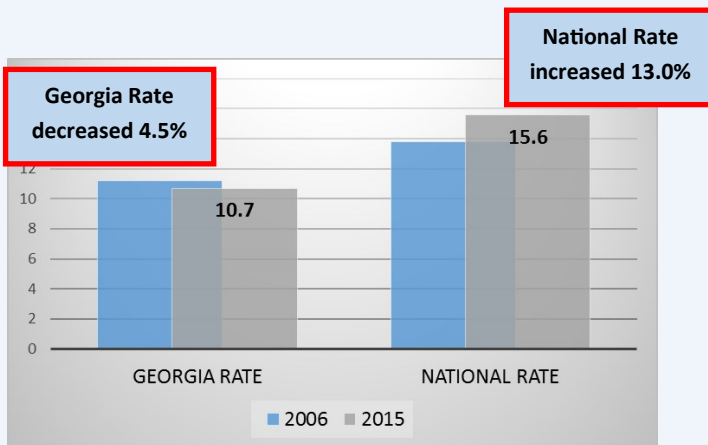
Board Certified Psychiatrists



There was an increase in physicians becoming board certified from 1996 to 2015.

- 1996: 61.1% of psychiatrists were board certified compared to 73.4% of total physicians.
- 2006: 71.0% of psychiatrists were board certified compared to 83.2% of total physicians.
- 2015: 80.3% of psychiatrists were board certified compared to 87.4% of total

Rate of Psychiatrists per 100,000 Population



- In 2015 there was 1,097 psychiatrists practicing in Georgia.
- Georgia's psychiatrist rate per 100,000 was 11.2 in 2006 and 10.7 in 2015, a decrease of 4.5%.
- The national rate for psychiatrists was 13.8 in 2006 and 15.6 in 2015, an increase of 13.0%.

DISTRIBUTION OF PSYCHIATRY PHYSICIANS MSA V/S NON - MSA

There are more psychiatrists practicing in Metropolitan Statistical Areas (MSAs), this has been the trend since 2004. In 2015 psychiatrists practicing in MSAs represented 91% of the psychiatry physician workforce. The number of psychiatrists in Non-Metropolitan Statistical Areas decreased by 51.9% from 2004-2015.

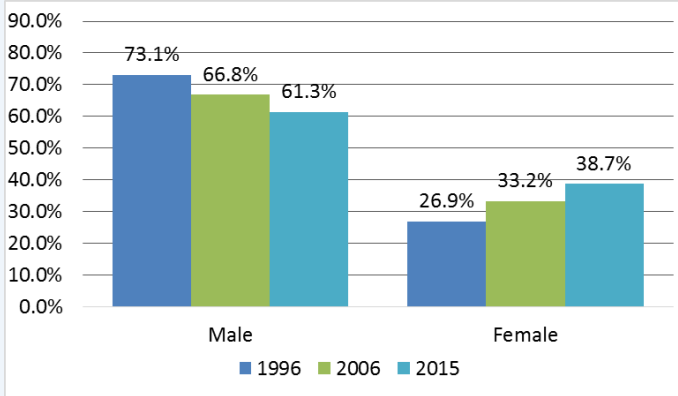
PERCENT OF PSYCHIATRIC PHYSICIANS BY YEAR GEORGIA MSA/NON-MSA

The number of psychiatrists practicing in Non-MSAs decreased by 51.9% from 2004 to 2015.

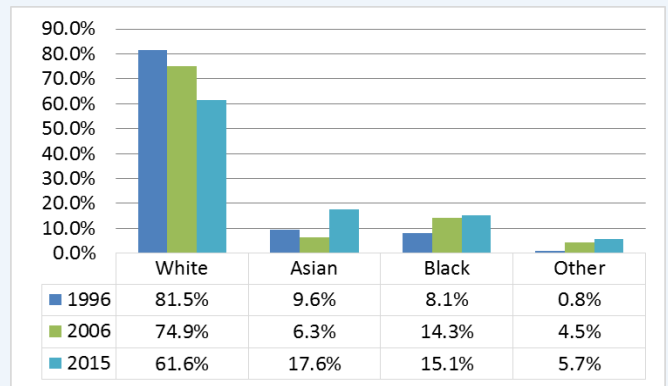
DESIGNATION	2004	2006	2015
MSA	81.3%	88.0%	91.0%
NON-MSA	18.7%	12.0%	9.0%

DEMOGRAPHICS

Distribution of Psychiatric Physicians by Gender

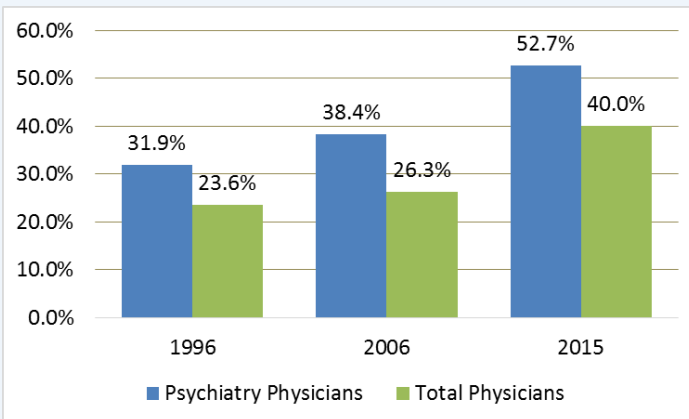


Distribution of Psychiatric Physicians by Race



Since 1996, there has been a 43.9% increase in the number of female psychiatric physicians practicing in Georgia. Additionally, the percentage of black psychiatrists has increased by 86.4% and Asian by 83.3%. The number of white psychiatrists has decreased by 24.4% since 1996.

Percentage of Psychiatry Physicians and Total Physicians age 55 and Older
1996 - 2015



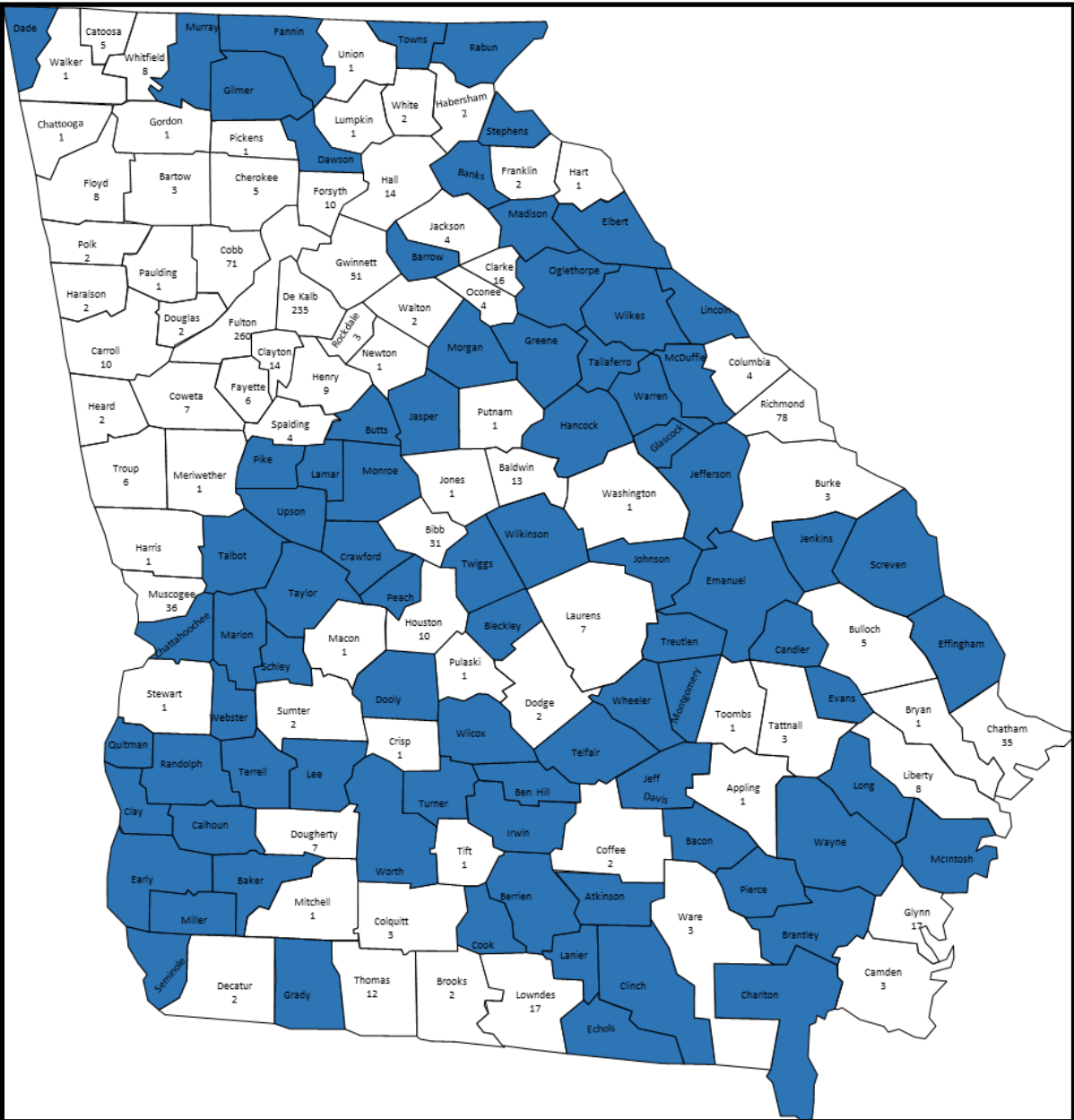
- The percentage of psychiatry physicians age 55 and older increased by 65.2% from 1996 to 2015.
- Total physicians age 55 and older increased by 69.5% from 1996 to 2015.

NUMBER AND RATE PSYCHIATRY PHYSICIANS

Georgia has experienced a 33.3% increase in the actual number of psychiatrists from 1996 to 2015. Due to population increases the *rate per 100,000 population for psychiatry physicians has declined in Georgia by 6.1%.



GEORGIA COUNTIES WITH NO PSYCHIATRISTS



There are 82 counties in Georgia with no psychiatry physicians.

- ⇒ Counties with no psychiatry physicians = blue
- ⇒ Counties with psychiatry physicians = white

For Questions or Information Contact:
Georgia Board for Physician Workforce



2 Peachtree St., NW, 36th Floor

Atlanta, Georgia 30303

www.gbpw.Georgia.gov

Email: GBPW@dch.ga.gov

Twitter: [@GaPhysicianWork](https://twitter.com/GaPhysicianWork)